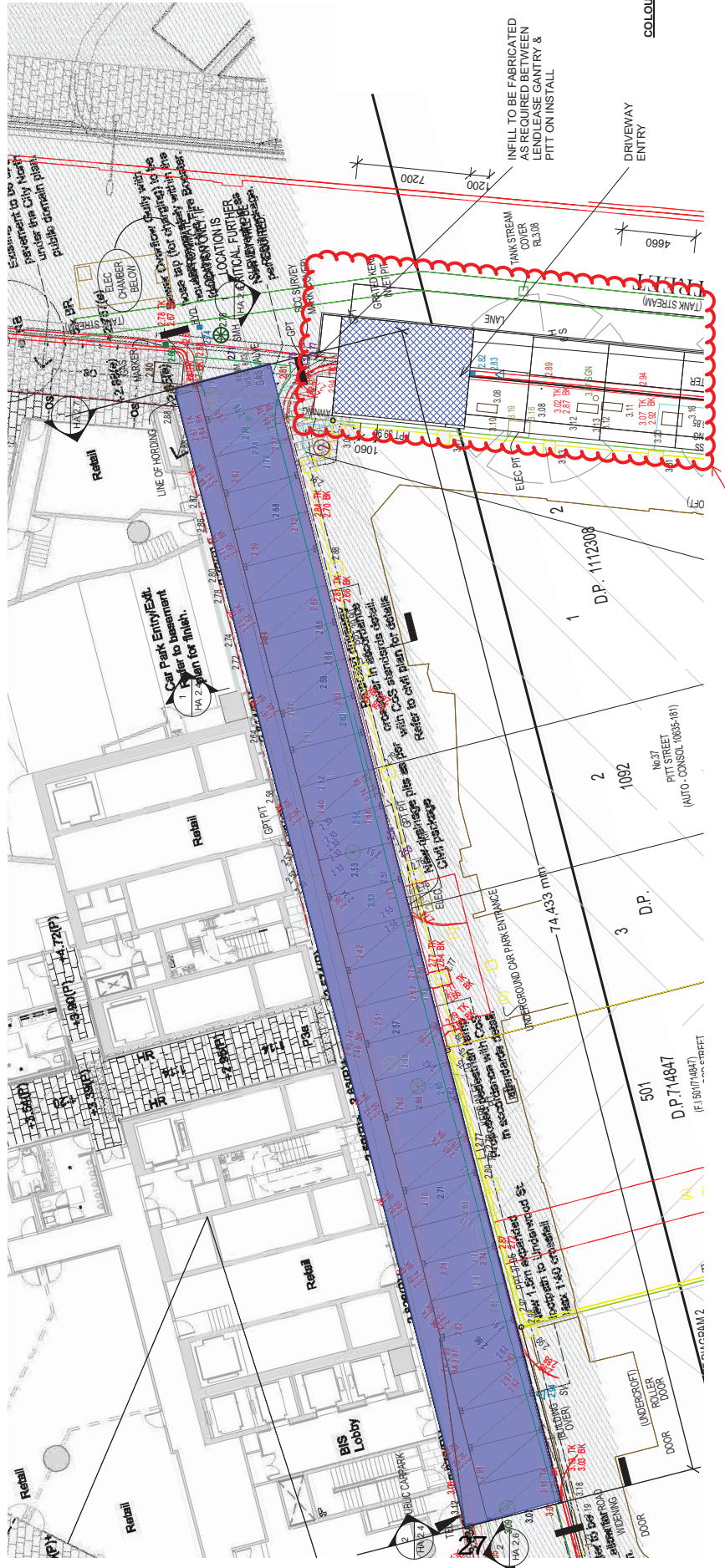


Attachment B

Selected Drawings

Hoarding Designed to take loads within it's shed materials/scaffolding and all items placed on hoarding are not to exceed 40 percent of hoarding 10kpa design live load capacity. Hoarding to be installed every second across hoarding to suitable every second across hoarding to distribute loads to distribute loads over the full width of the hoarding. Scaffolding and spreader beams by others.

HOARDING DECKS TO BE WATERPROOFED BY TMC
 100 (W) BULKHEAD LIGHT FITTINGS SPACED AT 5000 MAX SPACING



COLOURS:
 -BLACK STRUCTURE
 -BLACK FASCIA
 -WHITE ON DECK UNDERSIDE
 -LIGHTS TO UNDERSIDE EVERY 5m
 -ALL LOADS TO BE EVENLY DISTRIBUTED ACROSS DECK

PITT STREET
 DOUBLE B-CLASS
 HOARDING
 SUBJECT TO
 SEPARATE
 HOARDING PERMIT

LEGEND



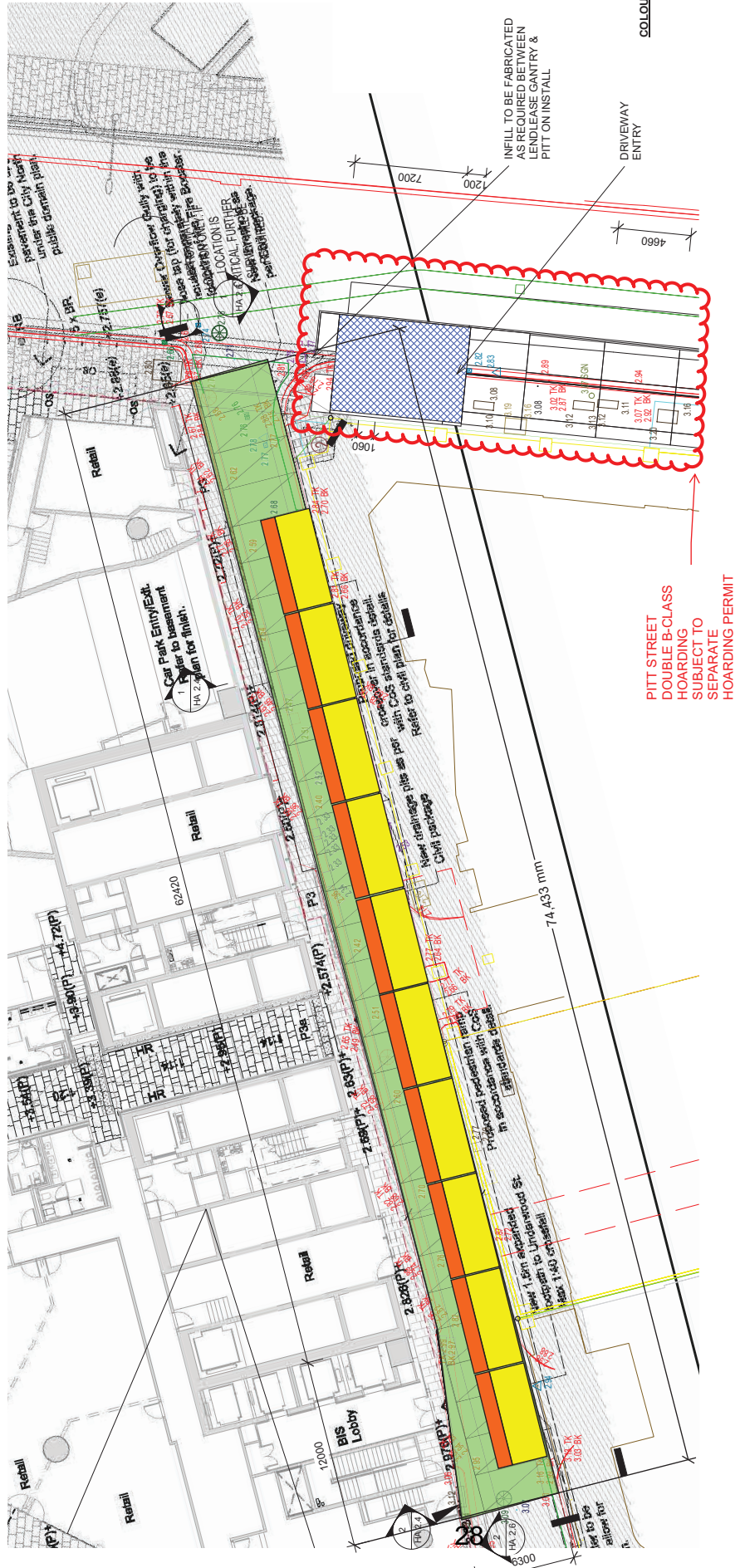
HOARDING DECK ENVELOP

SK01: UNDERWOOD ST GANTRY - PROPOSED ENVELOP
 APPROX 280 mm CLEARANCE WITH 55 PITT STREET BUILDING LINE
 APPROX 100 mm CLEARANCE WITH CIRCULAR QUAY TOWER BUILDING LINE
 DRAWINGS INDICATE PROPOSED ENVELOP FOR AUTHORITY CONSENT PURPOSES ONLY.
 SUBJECT TO DETAILED DESIGN COORDINATION.

| REV | DESCRIPTION | BY | DATE |
|---|-------------|-------|---------|
| Project Status | | | |
|  | | | |
| Traditional Hoardings | | | |
| 55 Pitt Street | | | |
| Underwood PLAN VIEW | | | |
| SCALE | DATE | DRAWN | CHECKED |
| 1:200 | 03.11.20 | NLS | Checker |
| PROJECT NO | DATE | BY | DATE |
| THC285 | HA | 1.5 | |

Hoarding Designed to take loads within it's shed materials/scaffolding and all items placed on hoarding are not to exceed 40 percent of hoarding 10kpa design live load capacity. All loads to be taken evenly across hoarding. Hoarding to be suitable for access made to Australian Standards to distribute loads over the full width of the hoarding. Scaffolding and spreader beams by others.

HOARDING DECKS TO BE WATERPROOFED BY THC
 100 MM BULKHEAD LIGHT FITTINGS SPACED AT 5000 MAX SPACING



COLOURS:
 -BLACK STRUCTURE
 -BLACK FASCIA
 -WHITE ON DECK UNDERSIDE
 -LIGHTS TO UNDERSIDE EVERY 5m
 -ALL LOADS TO BE EVENLY DISTRIBUTED ACROSS DECK

PITT STREET DOUBLE B-CLASS HOARDING SUBJECT TO SEPARATE HOARDING PERMIT

| REV | DESCRIPTION | BY | DATE |
|-----------------------|-------------|-------|---------|
| Project Status | | | |
| | | | |
| Traditional Hoardings | | | |
| 55 Pitt Street | | | |
| Underwood PLAN VIEW | | | |
| SCALE | DATE | DRAWN | CHECKED |
| 1:200 | 03.11.20 | NLS | THC |
| PROJECT NO | THC285 | HA | 1.5 |

- LEGEND**
- SITE SHED WALKWAY
 - SITE SHED INDICATIVE LOCATION
 - ENVELOP OF HOARDING COLUMN PERIMETER EXTENT

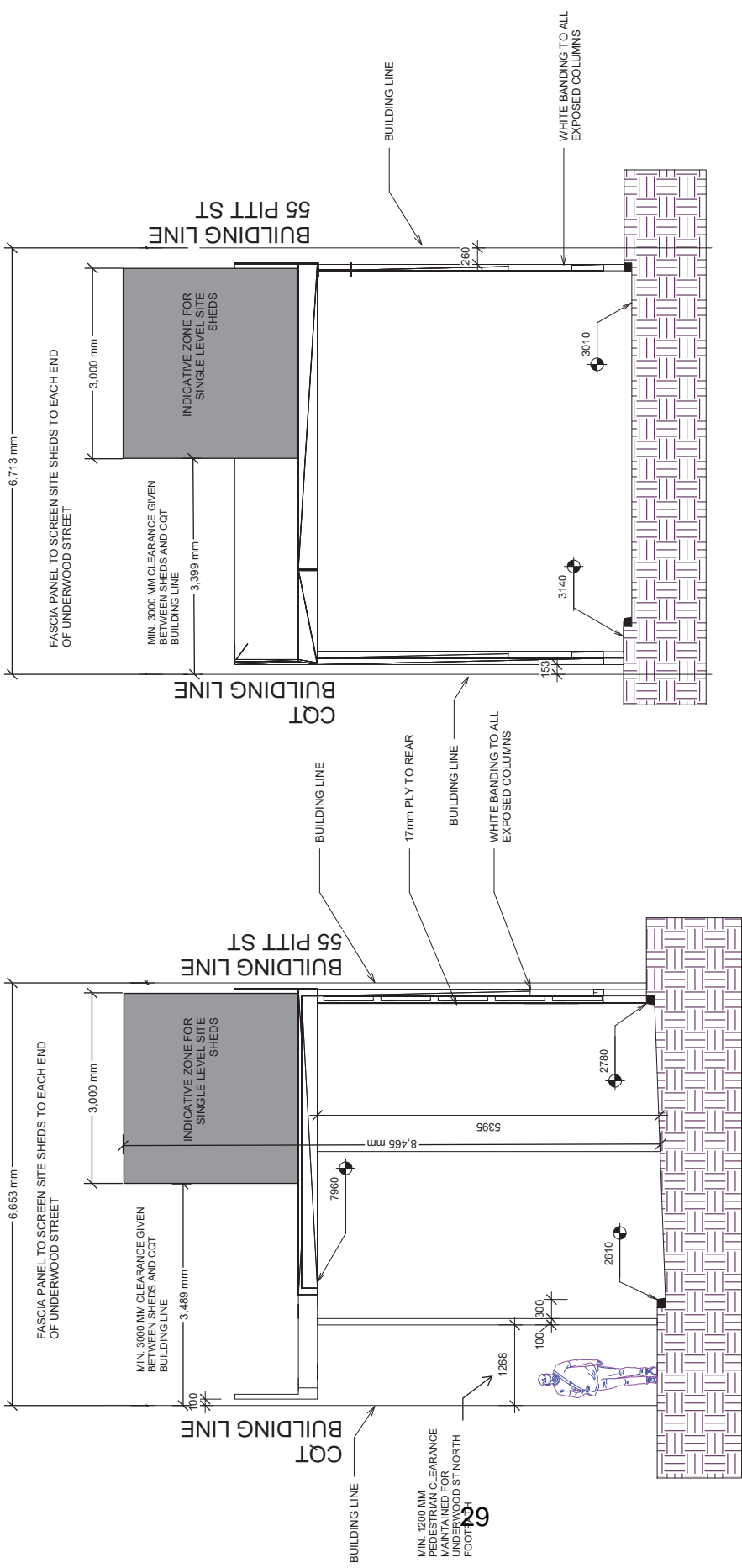
SK02: UNDERWOOD ST GENTRY - PROVISION FOR SHEDS

- SINGLE LEVEL SHEDS PLACED AGAINST 55 PITT STREET PROJECT BOUNDARY
- 10KPA OVERHEAD PROTECTION FOR ALL SHEDS
- MIN. 3000 mm CLEARANCE FROM SALESFORCE TOWER WILL BE PROVIDED

DRAWINGS INDICATE PROPOSED ENVELOP FOR AUTHORITY CONSENT PURPOSES ONLY. SUBJECT TO DETAILED DESIGN COORDINATION.

Hoarding Designed to take loads within it's design capacity. All materials, scaffolding and all items placed on hoarding are not to exceed 40 percent of hoarding 10kpa design live load capacity. Hoarding to be installed early in the construction process to allow for the distribution of loads to Australian Standards to distribute loads over the full width of the hoarding. Scaffolding and spreader beams by others.

HOARDING DECKS TO BE WATERPROOFED BY THC
 100 MM BULKHEAD LIGHT FITTINGS SPACED AT 5000 MAX SPACING



1 Cross Section 1
 1 : 50

2 Cross Section 2
 1 : 50

COLOURS:
 -BLACK STRUCTURE
 -BLACK FASCIA
 -WHITE ON DECK UNDERSIDE
 -LIGHTS TO UNDERSIDE EVERY 5m
 -ALL LOADS TO BE EVENLY DISTRIBUTED ACROSS DECK

| REV | DESCRIPTION | BY | DATE |
|----------------|-------------|----|------|
| Project Status | | | |



 15000 Pitt Street
 NSW 2227 Australia
 www.thc.com.au
 30 Macdonald Street
 Fremantle WA
 ABN: 46 136 132 714

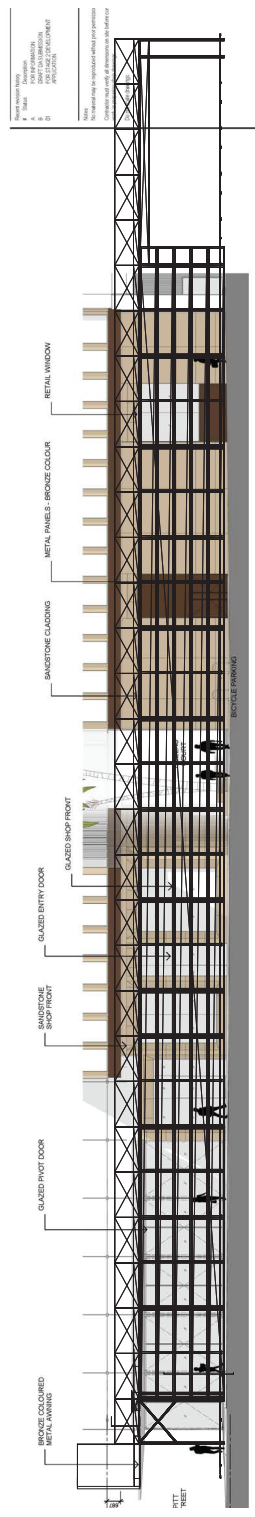
Traditional Hoardings

| | | | |
|-------------------|-------------|-------------|------------|
| 55 Pitt Street | | | |
| Underwood Section | | | |
| SCALE | DATE | DESIGNED BY | CHECKED BY |
| 1:50 | 03.11.20 | NJS | THC |
| PROJECT NO | DESCRIPTION | DATE | CHECKER |
| THC285 | HA 2.4 | | |

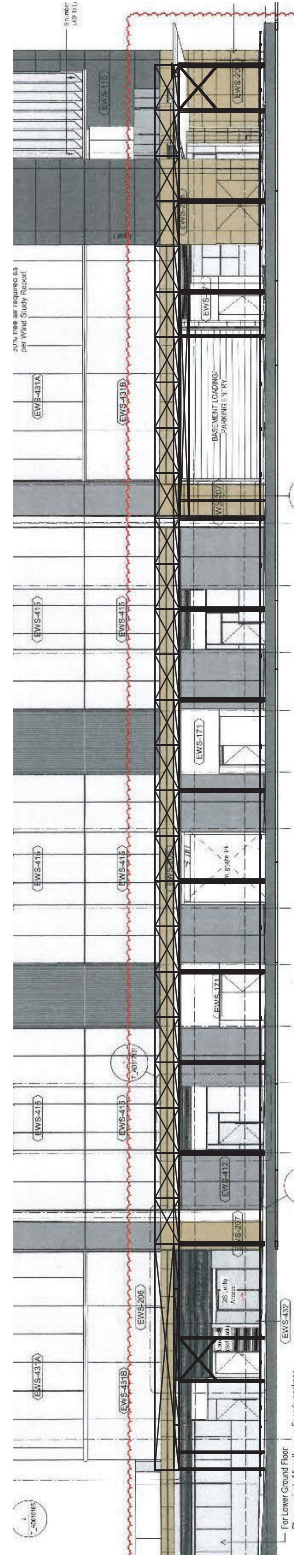
SK03: UNDERWOOD STREET GANTRY - CROSS SECTIONS
 APPROX 260 mm CLEARANCE WITH 55 PITT STREET BUILDING LINE
 APPROX 100 mm CLEARANCE WITH CIRCULAR QUAY TOWER BUILDING LINE
 DRAWINGS INDICATE PROPOSED ENVELOPE FOR AUTHORITY CONSENT PURPOSES ONLY. SUBJECT TO DETAILED DESIGN COORDINATION.

Hoarding Designed to take loads within it's design capacity. Hoarding materials/scaffolding and all items placed on hoarding are not to exceed 40 percent of hoarding 1.0kpa design live load capacity. Hoarding is to be designed to carry all loads to be applied to the hoarding. Hoarding to be suitable for use in accordance with Australian Standards to distribute loads over the full width of the hoarding. Scaffolding and spreader beams by others.

- HOARDING DECKS TO BE WATERPROOFED BY THC
- 100 MM BULKHEAD LIGHT FITTINGS SPACED AT 5000 MAX SPACING



Section 9
1 1 : 200



Section 8
2 1 : 200

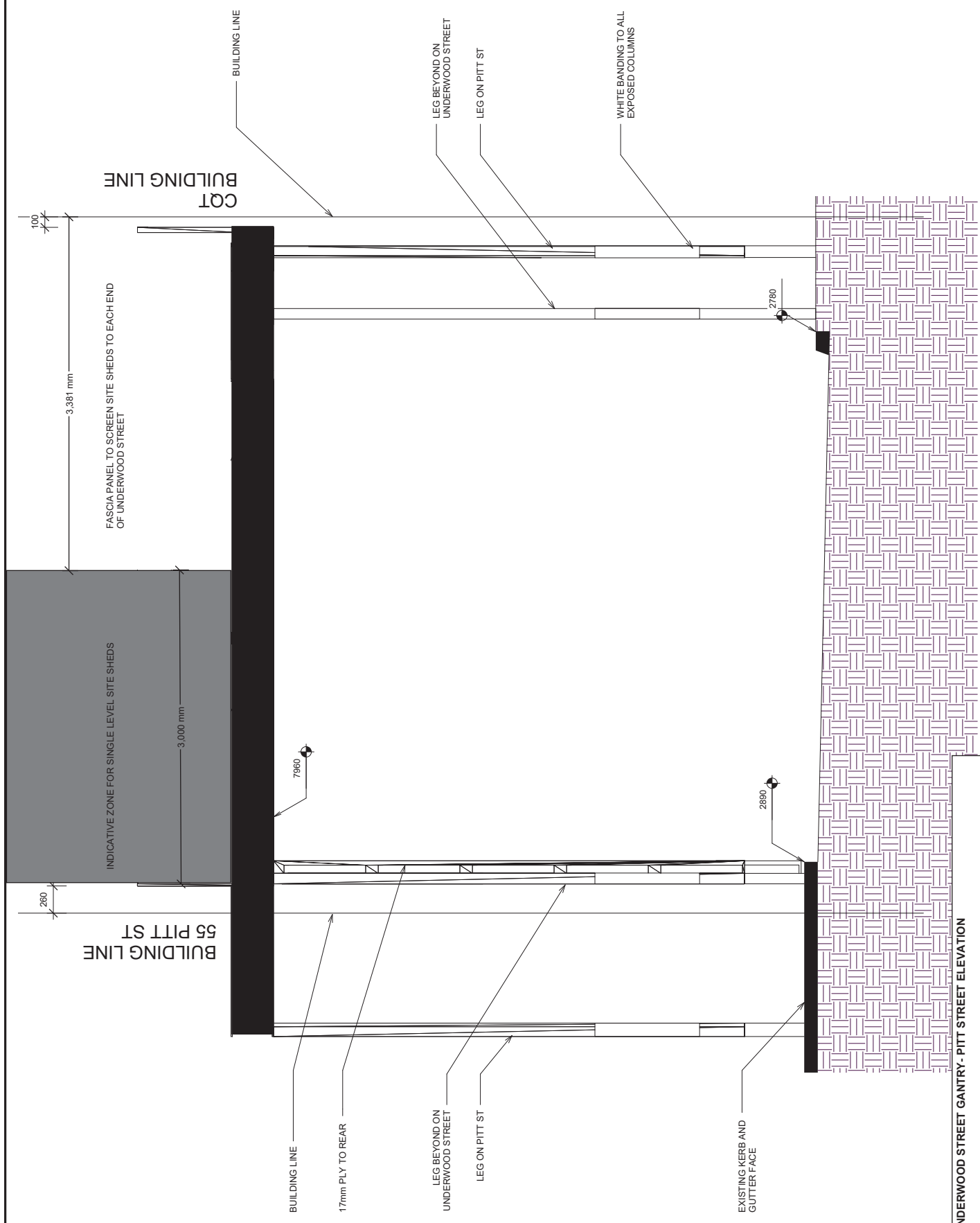
- COLOURS:
- BLACK STRUCTURE
- BLACK FASCIA
- WHITE ON DECK UNDERSIDE
- LIGHTS TO UNDERSIDE EVERY 5m
- ALL LOADS TO BE EVENLY DISTRIBUTED ACROSS DECK

| REV | DESCRIPTION | BY | DATE |
|---|-------------|---------|---------|
| Project Status | | | |
| | | | |
| EJB 15/11/2020 NSW 2227 Australia www.ejb.com.au 30 Macdonald Street Trawoolong NSW ABN: 46 136 132 714 | | | |
| Traditional Hoardings | | | |
| 55 Pitt Street | | | |
| Underwood Section | | | |
| SCALE | DATE | DRAWN | CHECKED |
| 1 : 200 | 03.11.20 | NLS | |
| PROJECT NO | CLIENT | CHECKER | CHECKER |
| THC285 | HA 2.6 | | |

SK04: UNDERWOOD STREET GANTRY - UNDERWOOD STREET ELEVATION
DRAWINGS INDICATE PROPOSED ENVELOP FOR AUTHORITY CONSENT PURPOSES ONLY. SUBJECT TO DETAILED DESIGN COORDINATION.

Hoarding Designed to take loads within it's shed materials/scaffolding and all items placed on hoarding are not to exceed 40 percent of hoarding 1.0kpa design live load capacity. Hoarding to be erected early in project and hoarding to be removed early in project. Hoarding to be made in accordance with standards to Australian Standards to distribute loads over the full width of the hoarding. Scaffold and spreader beams by others.

HOARDING DECKS TO BE WATERPROOFED BY THC
 100 (M) BULKHEAD LIGHT FITTINGS SPACED AT 5000 MAX SPACING



- COLOURS:**
- BLACK STRUCTURE
 - BLACK FASCIA
 - WHITE ON DECK UNDERSIDE
 - LIGHTS TO UNDERSIDE EVERY 5m
 - ALL LOADS TO BE EVENLY DISTRIBUTED ACROSS DECK

Project Status

| REV | DESCRIPTION | BY | DATE |
|--|-------------|----|------|
| | | | |
| FIB 15/150 Stirling Highway, 2/27, Perth WA 6000 www.fib.com.au 30 Melbourne Avenue, Fremantle WA 6155 ABRN: 46 136 132714 | | | |

| | | | |
|-----------------------|----------|--------|---------|
| Traditional Hoardings | | | |
| 55 Pitt Street | | | |
| Pitt St Cross Section | | | |
| SCALE | DATE | DRAWN | CHECKED |
| 1:25 | 03.11.20 | NLS | Checker |
| PROJECT NO | THC285 | HA 2.7 | REV |

SK05: UNDERWOOD STREET GANTRY - PITT STREET ELEVATION
 DRAWINGS INDICATE PROPOSED ENVELOP FOR AUTHORITY CONSENT PURPOSES ONLY.
 SUBJECT TO DETAILED DESIGN COORDINATION.